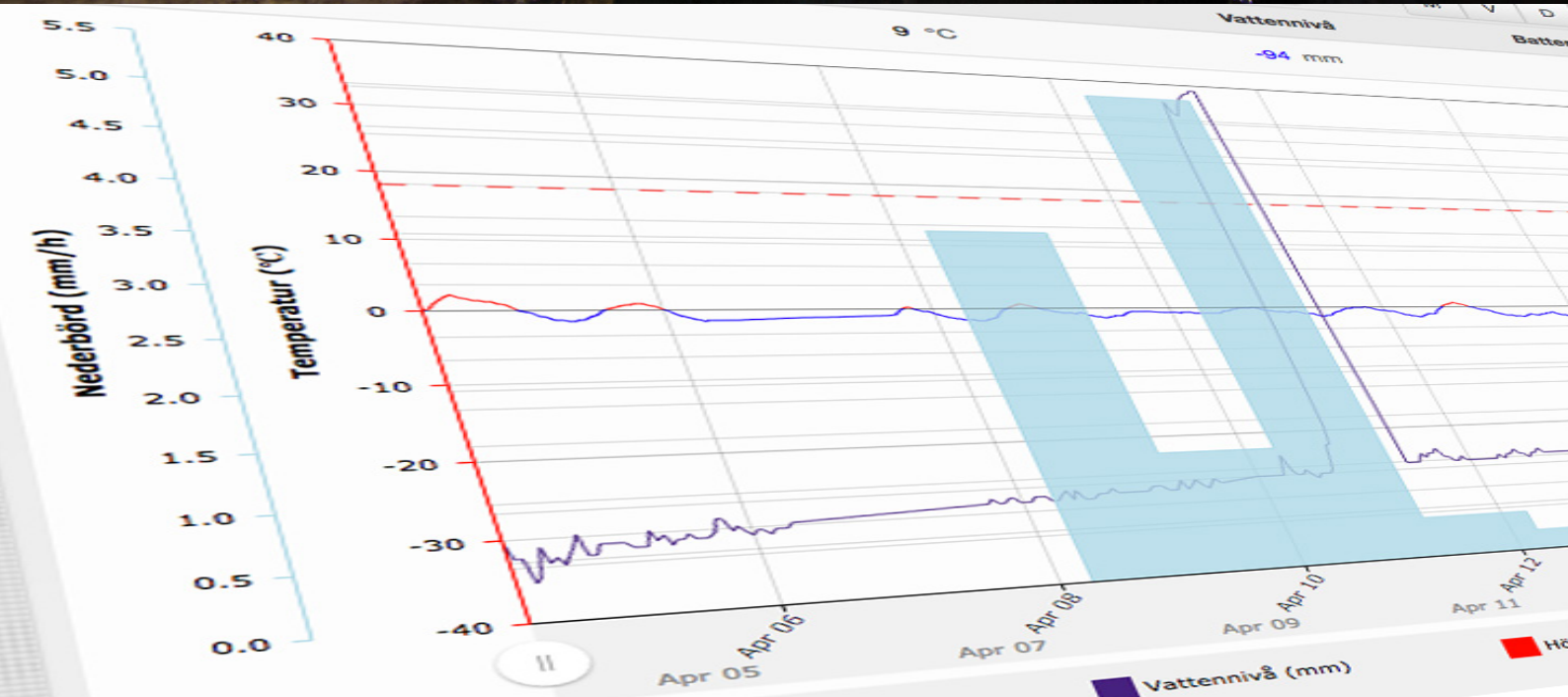


# AquaD

aqua  
ductus



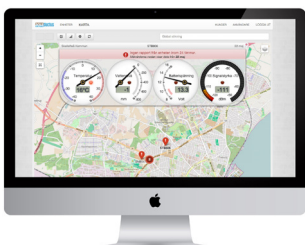
# "It works perfectly"

*– It is off course extra exiting that something positive can come out of Skellefteå being affected by the Cryptosporidium parasite, says Helena Jonsson, Department manager at Skellefteå Municipality Technical Office, who have used AquaD since 2011.*

*Today, Skellefteå Municipality has more than 40 AquaD-sensors in operation, monitoring sewer overflows an precipitation 24/7 all year around and Helena Jonsson is convinced that the system will be expanded, but also that other municipalities will look at this solution.*

*"That is the positive part in our business, we don't see other municipalities as competitors, but rather openly share our experiences and solutions. We have already got inquiries, and since the infrastructure are similar in the whole country, we have the same needs and same problems need to be solved"*  
*And so far, we have very positive experiences with AquaD.*

*"Since the problem with sewer overflows and stormwater infiltration can be in very hard-to-reach places, it has been hard to get a complete picture. This technology works perfectly. We can monitor large areas, and can concentrate inspections and video surveillancel/inspections to identified problem areas", says Helena Jonsson.*



## AquaD - Brings IoT to your sewer system

Sewage leaking and overflowing can cause serious pollution problems, especially after rainfall. Sewage contains very high levels of nutrients and pathogenic micro-organisms that can cause diseases and therefore it is essential that overflows and discharge points are monitored.

AquaD is a modern system of wireless sensors that can monitor these sewer overflows and alert when there is a risk of discharge. AquaD will also calculate the amount of discharge for easy reporting.

### Examples of other use cases for AquaD:

- As a warning system at locations with high risk of sewer water levels rising into basements, with high cost for renovations consequently.
- Connect AquaD to rain gauges and combine rain data with sewage level data to get an indication if the sewer is being compromised by illegal stormdrain connections, faulty joints or tree roots cracking pipes.

## AquaD - Intelligent and efficient

### • Touch free sensor

Simple to install and move. No mechanical parts touching the wastewater.

### • Built-in cellular communication

### • Cloud based monitoring system

All data collected in a central web portal for easy analysis and data export.

### • SCADA integration

AquaD can be integrated with existing monitoring systems using standard communication protocols such as Modbus, OPC and REST API.

## Short Facts

- AquaD is a complete system that, fast and efficient, collects data and runs the day to day monitoring of sewage overflows, rain gauges, discharge from pump stations, etc.
- AquaD free up time and resources to do more thorough inspections and investigations of wastewater infrastructure can be concentrated to problem areas.
- AquaD can quickly be extended, moved or reconfigured, and works with existing mobile network. You are in charge (your requirements decide what to do...)
- AquaD is a terrific tool that simplifies the work with creating environmental reports.

Contact us at [info@aquaductus.se](mailto:info@aquaductus.se)